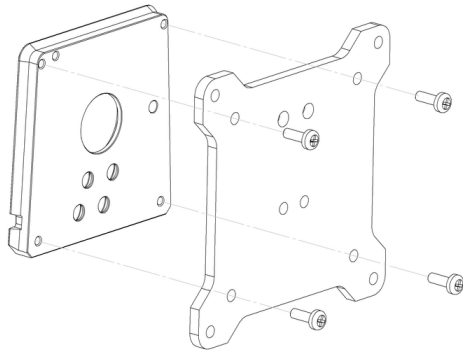




# Quick Release Mount Adapter to VESA 75 Assembly Instructions

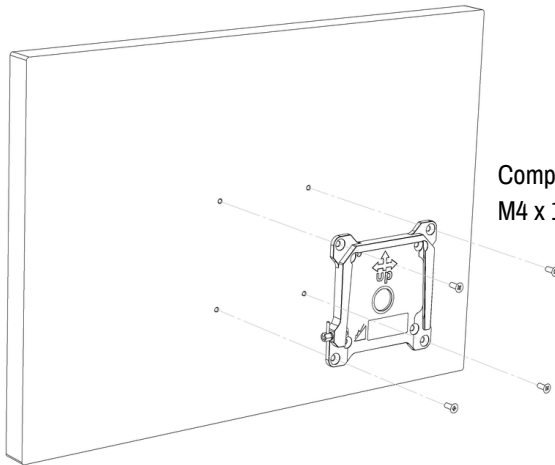


Components provided:

M4 x 10mm Pan Head Phillips

M4 x 12mm Pan Head Phillips

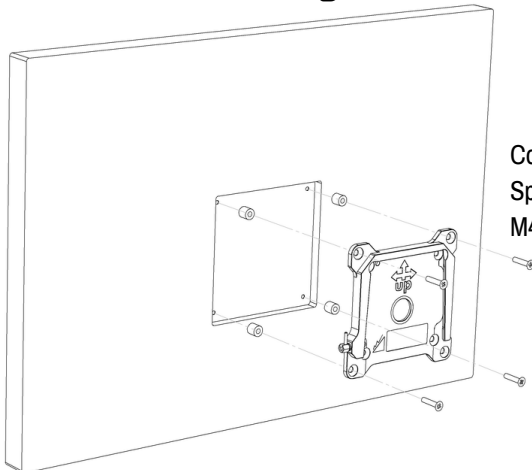
\*Different length screws are provided to accommodate third party monitor plate mounting. Check third party monitor plate for compatibility, as thickness of plate will affect screw length required.



Components provided:

M4 x 10mm Flat Head Phillips

## Recessed Mounting Holes



Components provided:

Spacers

M4 x 20mm Flat Head Phillips

**For Upgrade Innovations monitor mounts. Always check load rating of monitor mount. All mounting and installation shall conform to FD manufacturer and VESA Flat Display Mounting Interface (FDMI) Standard**



## Red Safety Thumbscrew

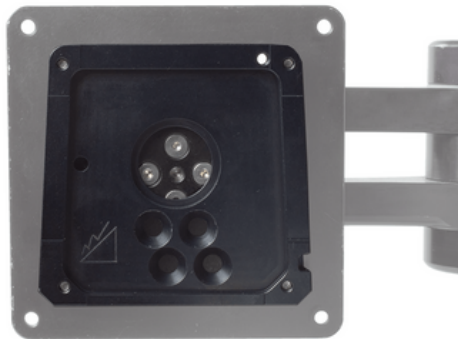
Additional locking mechanism to solidly secure your production monitor

Components provided:

M4 x 12mm Red Thumbscrew

M4 x 16mm Red Thumbscrew

\*Different length screws are provided to accommodate third party monitor plate mounting as well as standard Upgrade Innovations QR setup.



Mount QR Receiver Plate to third party monitor plate with provided screws.

Once mounted, transfer the position of the threaded M4 safety screw hole.

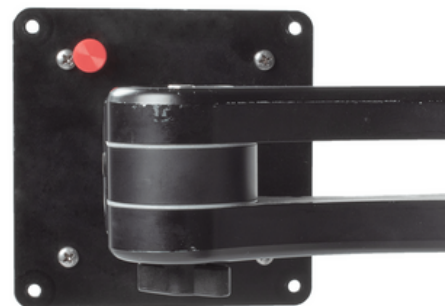
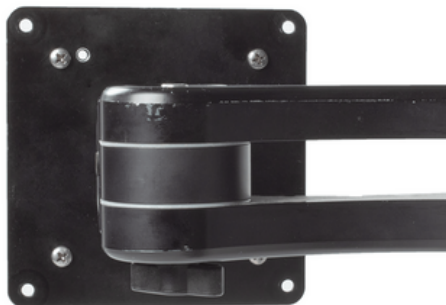
Remove QR Receiver Plate and drill a clearance hole for M4 safety thumbscrew into third party monitor plate. Remove burrs.

Mount QR Receiver Plate and thread in M4 x 16mm Safety Thumbscrew

Recommended Drill size:

Metric: 5mm drill

Imperial: Fraction sized drill 3/16"



The QR Receiver Plate can be mounted to certain third party monitor mounts, as well as our MMS11, MMS12, MMS09, MMS11-MC models, using our 1/4-20 Flat Head Mounting Pattern.

Two hole patterns are provided on the QR Receiver Plate, one centered and one offset. You want to have the VESA mounting pattern centered with the spigot. Offset hole patterns are used on our MMS09/MMS12 Single Hinge models, while centered hole patterns are used on our MMS11/MMS11-MC Twin Hinge models.

The provided M4 x 12mm Red Thumbscrew can be mounted normally to our threaded M4 safety screw hole.