



Whaley Rail II Assembly Instructions

Vertical Magliner Cart



Congratulations on receiving your Whaley Rail II system! In order to properly install the Whaley Rail II frame, you will need to follow the provided assembly instructions.

Tools Needed:

- 5-32 or 4mm Hex Key
- Hex Key for 5/16 SHCS
- Monkey Wrench for Hex Nut

Table of Contents

03 Single Rail Components

04 Vertical Magliner Whaley Rail II Assembly Instructions

05 Rail Clamp to 5/8 Baby Pin

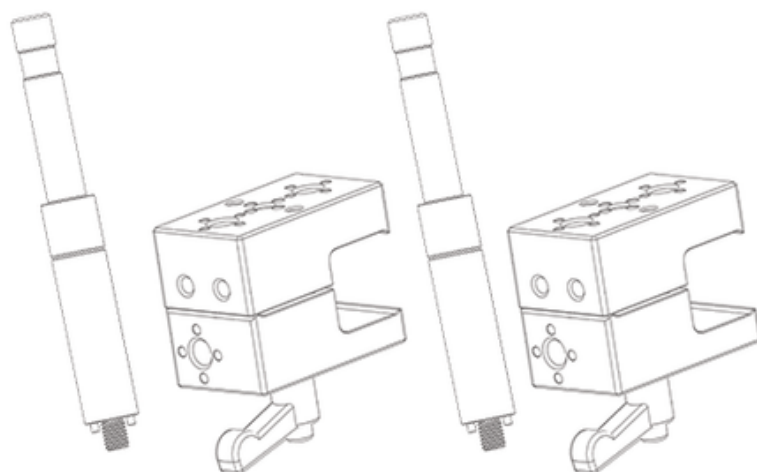
06 Production Monitor Mounting Options

08 Onboard Monitor Mounting Options

09 Whaley Rail II Accessories

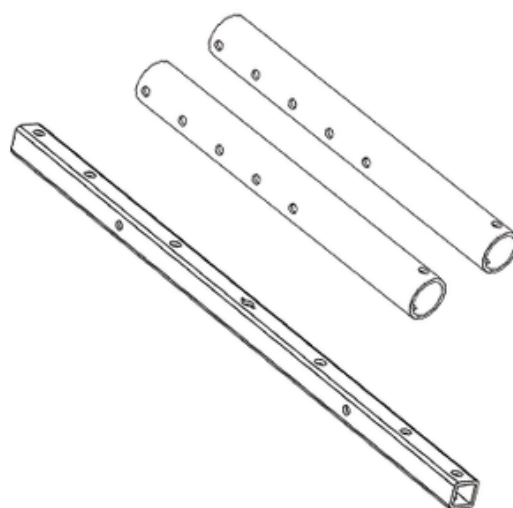


Vertical Magliner Base Assembly



13645- Rail Clamp to
Whaley Pin-Loc 6.6" Baby Pin

Also includes Vertical Magliner
Mounting Screw Kit



13" Vertical Posts

Magliner Vertical - 25.7" Rail

Vertical Magliner Whaley Rail II Assembly Instructions

Our vertical post gets mounted to the Magliner frame via a pair of 5/16 SHCS + hex nuts. There are three available holes in the Magliner frame. Each of these can be used to set height for upper monitor frame. The middle through hole is a bit larger in diameter so a washer is provided for the hex nut. 3/8" hex nuts are also provided as spacers for the 5/16" hex nuts to make the nut more accessible with a normal too.

We have 5 available through holes in our vertical posts for adjusting height. The spacing of the holes is 1-3/4" which relates to height adjustment intervals. The vertical posts are just less than 13" in length.



The 25.7" cross rail is attached to the vertical posts via 2x 5/16 SHCS + hex nuts



Note, the 6.6" baby pins can be specifically paired with our MMS09 VESA Monitor Mount to 5/8" Spigot – Ball-Loc to mount 25" monitors with the ability to swing monitor (bottom of monitor to clear the rail) for transport.

Rail Clamp to Whaley Pin-Loc Baby Pin

You are now ready to place your rail clamps.

Extremely solid clamp, rated for heavy production monitors.

Check out the Production Monitor Mounting Options section for monitor mounting options.

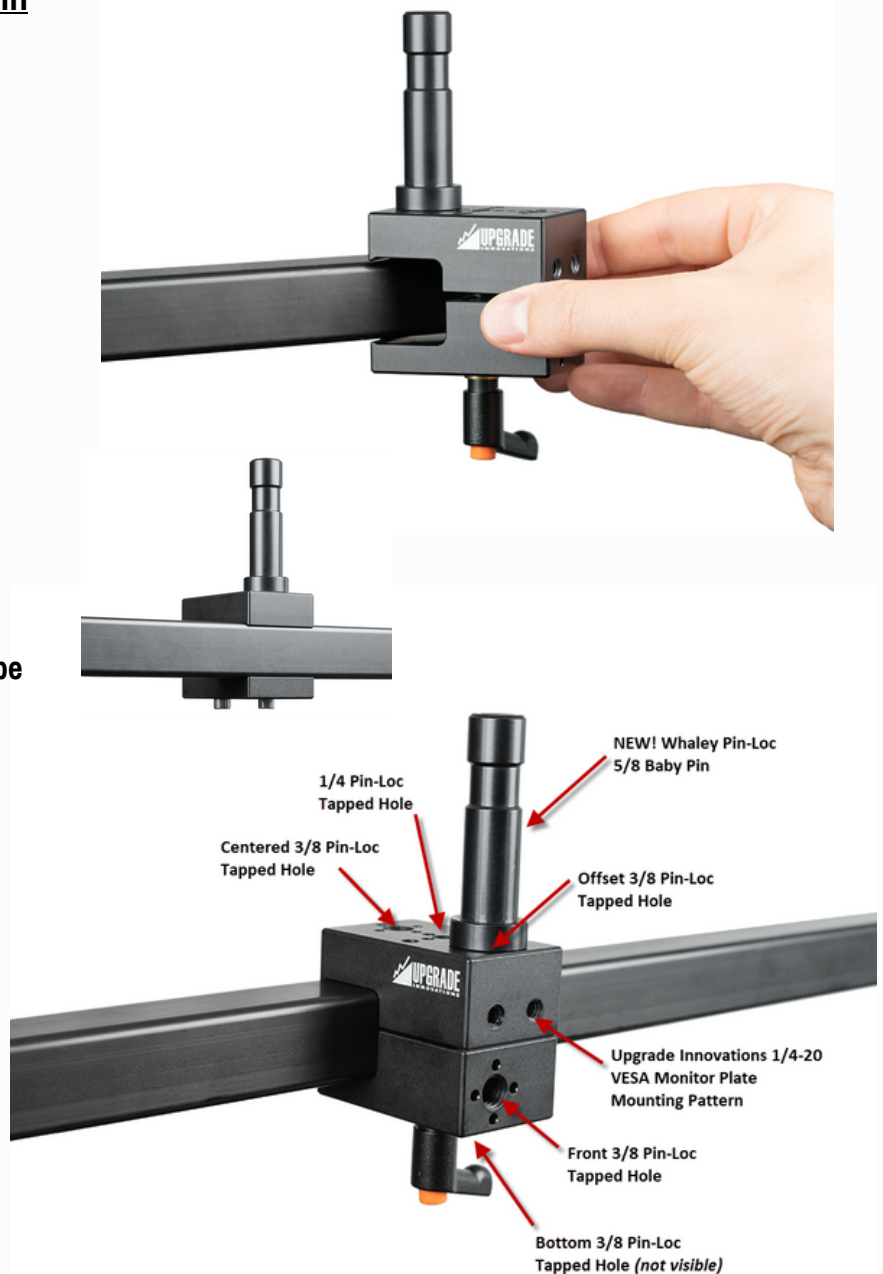
The Rail Clamps are easily placed on the horizontal rails or quick released off with two full turns of the adjustable lever.

***Tip: If the levers are not desired, they can be replaced with provided M5 x 40mm SHCS.**

The Whaley Pin-Loc 5/8 Baby Pin can be mounted to the ARRI 3/8-16" pin-loc mounting patterns on the Rail Clamp.

Use a 5/32 or 4mm hex key to tighten the Whaley Pin-Loc 5/8 Baby Pin.

The Rail Clamp has ARRI 3/8-16" pin-loc and SmallHD 1/4-20" pin-loc tapped holes on various sides for further mounting options.



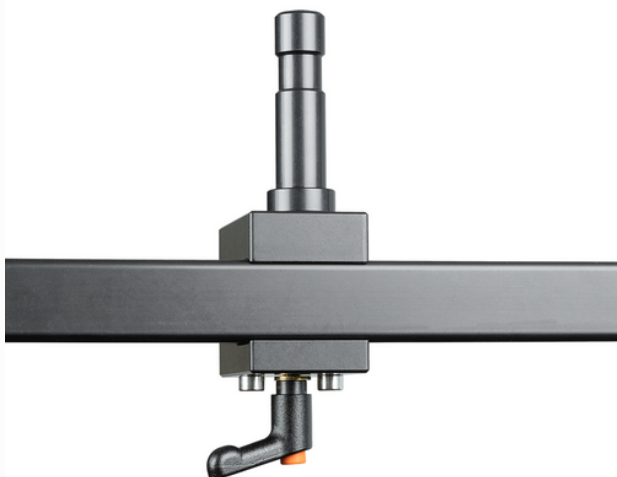
NEW – Rail Clamp now features the Whaley Pin-Loc 5/8 Baby Pin. The pin-loc design will prevent baby pin from twisting loose from cart forces/vibration.

Note: Whaley Pin-Loc is matching the design of the ARRI pin-loc standard, however with a longer 3/8-16 thread for a more rigid anchor point.

Setup Tip: The design of the Rail Clamp is meant to be removable and attached directly to a cross rail as needed, however if a user is looking for a "captive" Rail Clamp setup, this is also possible!

For this setup, the two provided M5 SHCS will need to be used. Apply a bit of removable Loctite to both M5 screws and thread both into the Rail Clamp (best to do this while it is already installed to the cross rail).

Once both screws are tightened, loosen each screw slightly so that when the adjustable lever is loosened, the Rail Clamp can still slide horizontally. The screws will prevent the Rail Clamp from opening fully to disengage from the cross rail, which can be beneficial for some setups!



Production Monitor Mounting Options

The Whaley Rail II basic system is outfitted with two Rail Clamps to 2.5" Baby Pins.

For users looking for a complete system, Upgrade Innovations offers professional monitor mounting solutions for mobile and studio applications. See below for various accessories.



Rail Clamp to Quick Release VESA Plate

Mount QR plate directly to Rail Clamp via 1/4-20" mounting pattern.

Incredibly rigid mounting setup.

Quickly release monitors for packing.



Rail Clamp to Quick Release - Landscape/Portrait VESA Plate

Mount QR plate directly to Rail Clamp via 1/4-20" mounting pattern.

Incredibly rigid mounting setup.

Quickly release monitors for packing.



MMS09 VESA Monitor Mount to 5/8" Spigot – Ball-Loc

Available with Standard VESA Monitor Plate, Quick Release, Landscape/Portrait or Quick Release-Landscape/Portrait

Designed for Mobile/Cart Applications with our positive locking ball-lock hinge system

Production Monitor Mounting Options Cont.



MMS11-MC VESA Monitor Mount to 5/8" Spigot – Twin Ball-Loc

Available with Standard VESA Monitor Plate, Quick Release, Landscape/Portrait or Quick Release-Landscape/Portrait

Designed for Mobile/Cart Applications with our positive locking ball-lock hinge system

Onboard Monitor and Accessory Mounting Options

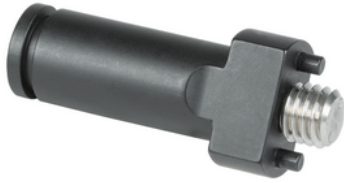


Rudy Arm Articulating Arm System

Industry tough articulating arm that is built for universal use.

Anchor arm with our positive locking ball-lock pivot clamps, while making use of the friction-lock pivot clamp to set viewing angle on monitor.





ARRI 3/8 Pin-Loc 15mm Mounting Spud

Arri 3/8" Pin-Loc compatible, ideal choice for a solid mounting option for 15mm accessories



SmallHD 1/4 Pin-Loc 15mm Mounting Spud

The SmallHD 15mm Mounting Spud - 1/4" Pin-Loc are specifically machined to securely hold your SmallHD monitors in place. Also compatible with a lot of Upgrade Innovations mounting brackets.



Leader LV Non-Twist Mounting Plate

Mount to Leader 5333, 5330, 5381, 5380, 5382 models adding ARRI 3/8" Pin-Lock and SmallHD 1/4 Pin-Lock.



Leader LV5350 Non-Twist Mounting Plate

Mount to Leader 5350 models adding ARRI 3/8" Pin-Lock and SmallHD 1/4 Pin-Lock.



Rudy Arm Pin-Loc Adapter for VESA Plate

Attaches to our VESA Mounting Plates via the 1/4-20 Flat Head Mounting Pattern to provide industry standard SmallHD 1/4" Pin-Loc and ARRI 3/8" Pin-Loc mounting patterns.



Cine Mounty 3 Cargo Mounting Plate

The Cine Mounty 3 is perfect for when you need to solid mount a small monitor. Removable rubber keepers, a built in rubber pad and a 1/4-20 knob screw keep your accessory from twisting loose.

Whaley Rail II Accessories



Whaley Rail II – Rail Clamp to 2.5\" Whaley Pin-Loc Baby Pin **NEW**

Add additional rail clamps to your system for further mounting options!

The 2.5" long non-twist Whaley Pin-Loc baby pins are also available separately.



Whaley Rail II – Rail Clamp to 6.6\" Whaley Pin-Loc Baby Pin **NEW**

Add additional rail clamps to your system for further mounting options!

The 6.6" long non-twist Whaley Pin-Loc baby pins are also available separately.



Whaley Rail II – Vertical Post End Plug to 3/8"

End Plug jams into our 1.5" Vertical Post by using a 5/32 or 4mm Allen Key to provide a 3/8" pin-loc tapped hole for mounting further accessories.

